

Dear colleagues,

It is our great pleasure to invite you to the first islet symposium in Bochum. Over the past years, increasing evidence has accumulated that defects in islet cell mass and function play a central role in the pathogenesis of both type 1 and type 2 diabetes. Accordingly, novel therapeutic approaches aiming to target the islet dysfunction in diabetic patients have emerged. This symposium will bring together a distinguished group of researchers and physicians devoted to the study of islet biology.

The scientific programme will be comprised of three different sessions: We will start by highlighting recent advances in our understanding of the pathogenesis of type 1 diabetes, novel immune interventions and potential imaging approaches to determine the fate of beta-cell mass in these patients. This session will be followed by three exciting presentations related to the causes of beta-cell death in type 2 diabetes, the resulting defects in beta-cell mass and function, and novel candidate genes linking the type 2 diabetic phenotype to the pancreatic beta-cells. In the afternoon we will focus on novel therapeutic modalities, such as incretin-based drugs and islet transplantation, and discuss the potential for beta-cell replication and stem cell therapy as future treatment strategies. Finally, we would like to draw your attention to the dinner lecture entitled "ten thousand people with diabetes and me", which will be given by Prof. Edwin Gale on the evening of April 3rd.

We are looking forward to exciting presentations, stimulating discussions, and fruitful future collaborations.

A warm welcome to the city of Bochum!



Juris J. Meier



Wolfgang E. Schmidt

SCIENTIFIC PROGRAM

April, 3rd:

19:30 Get together

20:00 Dinner lecture "Ten thousand people with diabetes and me"

Edwin Gale, Bristol

Location:

Rittersaal Castle Kemnade, An der Kemnade 10, 45527 Hattingen (Shuttle service will be provided)

April 4th:

09:00 – 09.15

Welcome and Introduction

Juris J. Meier, Bochum

Session 1: Type 1 diabetes

Chair: Edwin Gale, Bristol

09:15 – 09.45

Beta-cell death in type 1 diabetes

Sigurd Lenzen, Hannover

09:45 – 10:15

Immune intervention in type 1 diabetes

Bernhard Böhm, Ulm

10:15 – 10.45

Islet imaging

Stephan Schneider, Bochum

10:45

Coffee break

Session 2: Type 2 diabetes

Chair: Horst-Harald Klein, Bochum

11:45 – 12:15

Beta-cell apoptosis in type 2 diabetes

Peter Butler, Los Angeles

11:15 – 11:45

Beta-cell mass and function in type 2 diabetes

Robert Ritzel, Heidelberg

12:15 – 12:45

Genetics of islet dysfunction in type 2 diabetes

Andreas Fritsche, Tübingen

12:45

Lunch break

Session 3: Future treatment options

Chair: Stefan Bornstein, Dresden

13:45 – 15:15

Pancreas and islet transplantation: An Update

Bart Roep, Leiden

14:15 – 14:45

Stem cell therapy for diabetes

Ed Baetge, San Diego

14:45

Coffee break

15:15 – 15:45

Beta cell replication

Juris J. Meier, Bochum

15:45 – 16:15

Incretin therapies and other future developments

Wolfgang E. Schmidt, Bochum

16:15 – 16:30

Summary and conclusions

Juris J. Meier, Bochum

Speakers and Chairs:

- **Ed Baetge**
Novocell, Inc., 3550 General Atomics Court
San Diego, CA 92121, USA
- **Bernhard Böhm**
Dept. of Medicine I, University Hospital Ulm,
Robert-Koch-Str. 8, 89081 Ulm
- **Stefan R. Bornstein**
Dept. of Medicine I and Poliklinik III
University Hospital Dresden, Fetscherstraße 74,
01307 Dresden
- **Peter Butler**
Division of Endocrinology, Diabetes and Hypertension,
UCLA Department of Medicine
24-130 Warren Hall, 900 Veteran Avenue
Los Angeles, CA 90095-7073, USA
- **Andreas Fritsche**
Dept. of Medicine IV, Eberhard-Karls-University
Otfried-Müller-Straße 10, 72076 Tübingen
- **Edwin AM Gale**
Diabetes and Metabolism Unit, Medical School Unit
Southmead Hospital, Bristol, UK
- **Horst Harald Klein**
Dept. of Medicine I, Division of Endocrinology, Diabetes
and Metabolism, Bergmannsheil GmbH, Bürkle-de-la-
Camp-Platz 1, 44789 Bochum
- **Sigurd Lenzen**
Hannover Medical School, Dept. of Clinical Biochemistry,
Carl-Neuberg-Str. 1, 30625 Hannover
- **Juris J. Meier**
Dept. of Medicine I, University Hospital St. Josef-
Hospital, Gudrunstr. 56, 44791 Bochum
- **Robert Ritzel**
University Hospital, Dept. of Medicine I
Im Neuenheimer Feld 410, 69120 Heidelberg
- **Bart O. Roep**
Leiden University Medical Center
P.O. Box 9600, NL-2300 RC Leiden, Netherlands
- **Wolfgang E. Schmidt**
Dept. of Medicine I, University Hospital St. Josef-
Hospital, Gudrunstr. 56, 44791 Bochum
- **Stephan Schneider**
Dept. of Medicine I, Division of Endocrinology, Diabetes
and Metabolism, Bergmannsheil GmbH, Bürkle-de-la-
Camp-Platz 1, 44789 Bochum

Scientific program and organization:

Juris J. Meier, M.D.,
Assistant Professor
Department of Medicine I
St. Josef-Hospital
Ruhr-University Bochum,
School of Medicine
Gudrunstraße 56
44791 Bochum (Germany)
Tel. +49 234 509-2711
Fax + 49 234 509-2714
juris.meier@ruhr-uni-bochum.de

Office

Ilka Örtel
Tel. +49 234 509-2311
Fax +49 234 509-2309
ilka.oertel@ruhr-uni-bochum.de

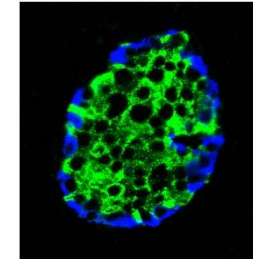
Supported by a non-restricted grant
by Novo Nordisk Pharma GmbH.

This symposium will be accredited by
the Ärztekammer Westfalen



Beta-cell symposium Bochum

April 3rd – 4th, 2009



Gastronomie
im
Stadtspark
Klinikstraße 41-43
44791 Bochum
Germany